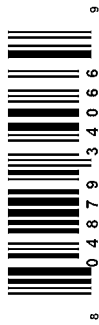


Mila Besich Lira | Superior Sun



Antique market in Superior Page 6

A community publication of Copperarea.com

Affordable Dental Care

- Full Service Denture Lab On Site •
- Emergencies & Walk-Ins Welcome •
- Most Dental Insurance Accepted •
- Financing Available •

\$100 OFF

Dentures or Partials

\$139

Same Day Denture Reline

FREE TEETH WHITENING

with New Patient Exam, X-Rays & Cleaning

\$75 OFF

Crowns

FREE Consultation &

\$250 OFF

Immediate Dentures

- Se Habla Español • Senior Citizen Discount •

Open Monday - Saturday

Located in the Goodwill Plaza

(Southeast corner of Signal Butte & Apache Trail)

10839 E. Apache Trail, Ste. #119

Apache Junction

480-354-6177

Owned by George & Dee "Lola" Ybarra

**SAME DAY
DENTURE
REPAIRS!**

Find us on Facebook
@ CopperArea

The Superior Sun

USPS 529-320

James Carnes.....Publisher
Michael Carnes..... General Manager
Jennifer Carnes..... Managing Editor
Mila Besich-Lira.....Advertising
John Hernandez.....Reporter
Cat Brown.....Reporter

Email:

jenniferc@MinerSunBasin.com;

cbnsun@MinerSunBasin.com;

michaelc@MinerSunBasin.com

www.copperarea.com

Find us at Facebook.com/CopperArea

Follow us at twitter.com/CopperAreaCom

Published each Wednesday in Superior, Arizona by Copper Area News Publishers. Subscription rates in advance: \$35.50 per year or \$31.50 for 6 months in Pinal County; \$40.50 per year or \$36.50 for 6 months elsewhere in the U.S. Change of address should be sent to the publishers at P.O. Box 579, Kearny, AZ 85137.

Member: Arizona Newspaper Association

Second class postage is paid at Superior, Arizona. Postmaster: Address changes to *The Superior Sun*, P.O. Box 579, Kearny, AZ 85137.

Telephone (520) 363-5554

Fax (520) 363-9663

"There are numerous countries in the world where the politicians have seized absolute power and muzzled the press. There is no country in the world where the press has seized absolute power and muzzled the politicians"

—David Brinkley

OBITUARY

Sally Gamez Abril

Sally Gamez Abril, 92 was peacefully called by our blessed Father on June 9, 2018.

Sally was born in Peoria, Arizona on June 17, 1925 and was raised in Phoenix, Arizona by her mother Lupe Monge. Sally met her husband Roy Abril at the age of 16 and their marriage a few years later prospered for 64 years! Together they raised 5 children, Danny, Louie, Sylvia, Roy Jr. and Gerald. Their life together began in Sonora, Arizona and they were one of the last remaining families to vacate before the town was destroyed by fire. Their new life began in Kearny, Arizona in 1965 and Sally remained there until her passing. Sally's primary goal in

life was to sustain her family in all ways possible, both emotionally and physically.

Sally also dedicated many years to the Infant Jesus of Prague Choir and the Hand Me Up Store, striving for charitable community contributions. Sally's other interests included gardening, music, dancing, ceramics, doll and bird collections and her dog, Copper. Sally's love overflowed for Norma Rogdriguez, who she loved also as a daughter. Norma made it possible for Sally to continue living independently in her home the last few years of her life. Their relationship began in 1968.

Sally is preceded in death by her husband Roy, two sons, Danny and Gerald as well as her granddaughter, Gina. Sally is survived by her children, Louie Abril (Lydia), Roy Abril Jr. and Sylvia McCormick and daughter in law Rachel Abril. She is also survived by 6 grandchildren and 5 great grandchildren. May she rest in peace.

Funeral Service will be held on Saturday, June 16th, 2018 at the Infant Jesus of Prague Catholic Church, Kearny, AZ. Visitation at 8:30 a.m., Rosary at 9 a.m., Mass at 10 a.m. and interment to follow at Mountain View Memorial Gardens, Mesa, AZ.

Griffith Mortuary is providing exceptional family service. 101 Johnston Dr., Kearny, AZ 85137. Ph. (520) 363-5353. GriffithMortuary.com.



Superior Funeral Home

Serving all of your Funeral, Memorial,
Cremation and Pre-Planning Needs

www.superiorfuneral.com

379 South Ray Road, Superior

(520) 689-2692

Rob Bulman, Owner

*Dedicated to providing services to the families of
the Copper Corridor with care and compassion*

AARP

Auto Insurance
Program from
THE HARTFORD

AUTO INSURANCE

DESIGNED FOR AARP MEMBERS

\$370*

AVERAGE SAVINGS
WHEN YOU SWITCH

IF YOUR CURRENT
INSURANCE IS:

GEICO

ALLSTATE

STATE FARM

YOU COULD
SAVE:

\$380

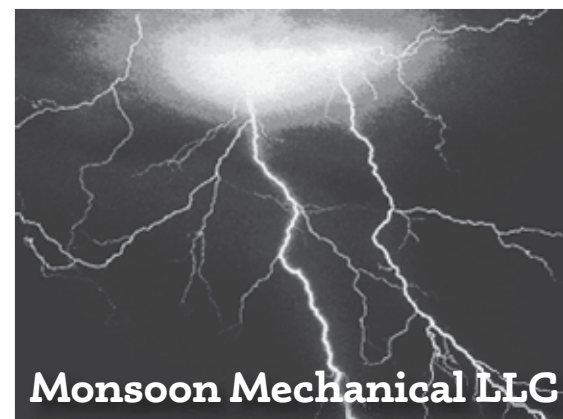
\$477

\$383

TO SPEAK WITH
AN AGENT AND
REQUEST A FREE
QUOTE CALL:

1-877-882-8359

*Savings amounts are averages based on information from The Hartford's AARP Auto Insurance Program customers who became new policyholders between 1/1/16 and 12/31/16 and provided data regarding their savings and prior carrier. Your savings may vary. AARP and its affiliates are not insurers. Paid endorsement. The Hartford pays royalty fees to AARP for the use of its intellectual property. These fees are used for the general purposes of AARP. AARP membership is required for Program eligibility in most states. The AARP Automobile Insurance Program from The Hartford is underwritten by Hartford Fire Insurance Company and its affiliates, One Hartford Plaza, Hartford, CT 06155. In Washington, the Auto Program is underwritten by Hartford Casualty Insurance Company. Auto program is currently unavailable in Massachusetts, Canada and U.S. Territories or possessions. Specific features, credits and discounts may vary and may not be available in all states in accordance with state filings and applicable law. Applicants are individually underwritten and some may not qualify.



Monsoon Mechanical LLC

Air Conditioning & Heating

Service • Installation • Maintenance

Licensed - Bonded - Insured

(480) 229-8966

Ike Martinez

www.MonsoonMechanical.com

GREAT SAVINGS AT SAVE MONEY MARKET

PRICES GOOD 6/13/18 THRU 6/26/18

HAPPY FATHER'S DAY - PLAN A BIG FEAST FOR DAD!

Pick up your 2-week ad flier for additional savings throughout the store!

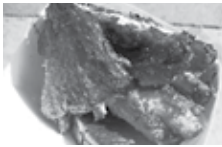
Pollo Asado



\$1.99/lb

*Marinated Boneless Chicken
Grill Ready*

Pork Ribs



\$1.49/lb

*Country Style Cuts
Seasoned • Grill Ready*

New York Strip Steaks



\$4.99/lb

*Beef
Boneless*

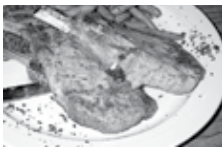
Beef Sirloin



\$2.99/lb

*Marinated Flat Meat
Carne Asada*

Pork Chops



\$2.69/lb

*Center Cuts • Smoked
Just Heat & Serve*

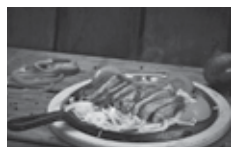
Taco Meat



\$2.99/lb

*Diced Beef Portions
Carne Picada*

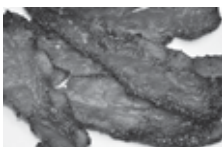
Beef Fajitas



\$3.99/lb

*Beef Steak Strips With Peppers
& Onions • Quick to Fix*

Pepper Bacon



\$3.99/pkg.

*Thick Cut Slices
2-lb. Packs*

100% Pure Beef Chorizo



\$3.49/lb

*Fresh Made • Fresh Ingredients
Hot or Mild • Also Triple Hot*

Fresh Bratwurst



\$3.99

*Also Hatch Green Chile Brats
1-lb Package*

Half Menudo



\$19.99

*Includes Cut-Up Tripe/Feet/
3-lbs. Nixtamal • Pot Ready*

Raw Shrimp



\$17.99

*Extra Large • Fresh Frozen
EZ-Peel • 2-lb Bag*



NOW AVAILABLE: SUMMER MEATS FOR THE FAMILY GATHERINGS - CHECK THEM OUT ON OUR FACEBOOK PAGE

NEW LOW PRICES THROUGHOUT THE STORE!

420 W. Main St., Superior, AZ • 520-689-2265 • www.SaveMoneyMeats.com



Superior Police Report

According to state law, police may arrest suspected offenders by two methods. The suspect may be physically taken into the department and booked into jail, or the arresting officer may write a citation and release the suspect to appear in court later. All suspects are presumed innocent until proven guilty in a court of law. Only criminal citations are listed. All damage amounts are estimates.

Items are given to The Superior Sun

by the Superior Police Department and reflect information available at the time the report is compiled.

Activity listed May 31 to June 6. May 31

An accident on private property was reported in the 1100 block of Hwy. 60.

Jess A. Jimenez, 61, Superior, was arrested in the 400 block of Picket Post Dr. and was charged with aggravated harassment and interfering with judicial proceedings. He was transported and booked into the Pinal County

Jail in Florence.

June 2

Veronica M. Velasquez, 24, Superior, was arrested in the 400 block of Valentine St. and was charged with disorderly conduct/DV (domestic violence) and criminal damage.

June 6

Frankie B. Garcia, 30, Superior, was arrested in the 600 block of Porphyry St. and was charged with two counts of assault/DV and one count of disorderly conduct/DV. He was transported and booked into the Pinal County

Jail.

Criminal damage was reported in the 300 block of Bridge St.

Calls not listed include traffic stop (21), disturbance (5), citizen assist (5), information (2), welfare check (4), suspicious activity (4), civil matter (1), trespassing (2), animal complaint (2), alarm drop (3), fire/smoke (3), found property (1), agency assist (7), medical (1), attempt to locate (1), field interview (1), 911 hang-up (1), neighbor problem (1) and illegal dumping (1).

Public Notice

Arizona Water Company (the "Company") has released its 2017 Water Quality Report (Consumer Confidence Report) for its Superior water system, PWSID 11-021. The Company will not be mailing a copy of the report to its customers, because Arizona Administrative Code R18-4-117, has granted a mailing waiver to small water systems with a population less than 10,000 people. Copies are now available: at the Superior office located at 165 N. Magma Avenue; via mail by sending a request to Arizona Water Company, P. O. Box R, Superior, AZ 85273-1917; via our website at www.azwater.com; or by calling the Superior office at 520-689-2312. The entire report is also printed in the newspaper today. The Company recommends that customers serving more than one housing unit post a copy of the 2017 Water Quality Report in a conspicuous place.

ARIZONA WATER COMPANY

– 2017 ANNUAL WATER QUALITY REPORT FOR SUPERIOR, ARIZONA, PWSID NO. 11-021 –

This report contains important information about your drinking water.
Este informe contiene información importante sobre su agua potable.
Tradúzcalo o hable con alguien que lo entienda bien.

Arizona Water Company provides groundwater to its Superior customers from wells located near Florence Junction.

All water samples are collected by state-certified employees of Arizona Water Company or by the Arizona Department of Environmental Quality ("ADEQ"). Samples are analyzed by state-certified independent laboratories and the results are forwarded to ADEQ. The following report provides detailed information about the quality of the water delivered to customers. The water supplied by Arizona Water Company complies with all state and federal safe drinking water standards and regulations.

DETECTED WATER QUALITY CONSTITUENTS - GROUNDWATER

Primary Standards							
Water Quality Constituent	Units	MCLG	MCL	Range of Levels Detected	Sample Year	Typical Source of Detected Constituent	
Inorganics							
Arsenic	ppb	0	10	7.2 - 7.6 Highest Running Annual Average - 7.5	2017	Erosion of natural deposits; runoff from orchards; runoff from glass and electronics production wastes	
Barium	ppm	2	2	0.01	2011	Discharge of drilling wastes; discharge from metal refineries; erosion of natural deposits	
Chromium, Total	ppb	100	100	4	2011	Discharge from steel and pulp mills; erosion of natural deposits	
Fluoride	ppm	4	4	0.4	2011	Erosion of natural deposits; water additive which promotes strong teeth; discharge from fertilizer and aluminum factories	
Nitrate (as Nitrogen)	ppm	10	10	1.4	2017	Runoff from fertilizer use; leaching from septic tanks, sewage; erosion of natural deposits	
Disinfectant / Disinfection Byproducts							
Water Quality Constituent	Units	MCLG (MRDLG)	MCL (MRDL)	Average Level Detected	Range of Levels Detected	Sample Year	Typical Source of Detected Constituent
Chlorine Residual	ppm	(4)	(4)	0.9	0.3 - 1.4	2017	Drinking water disinfection
Haloacetic Acids (five)	ppb	NA	60	4	3.8 - 4.1	2017	Byproduct of drinking water disinfection
Total Trihalomethanes	ppb	NA	80	30	28 - 32	2017	Byproduct of drinking water disinfection
Additional Constituents (Unregulated)							
Sodium	ppm	NS	NS	74	74	2011	Unknown
Lead and Copper Monitoring							
Water Quality Constituent	Units	MCLG	Action Level	90 th Percentile of Sample Results	Number of Samples That Exceeded the Action Level	Sample Year	Typical Source of Detected Constituent
Copper	ppm	1.3	1.3	0.1	0	2016	Internal corrosion of household water plumbing systems; erosion of natural deposits; leaching from wood preservatives
Lead	ppb	0	15	5	0	2016	Internal corrosion of household water plumbing systems; erosion of natural deposits

Your drinking water complies with the United States Environmental Protection Agency's ("USEPA") safe drinking water standard for arsenic, though it contains low levels of arsenic. USEPA's safe drinking water standard balances the current understanding of arsenic's possible health effects against the costs of removing arsenic from drinking water. USEPA continues to research the health effects of low levels of arsenic, which is a mineral known to cause cancer in humans at high concentrations and is linked to other health effects such as skin damage and circulatory problems.

Note: In addition to the constituents listed in this report, Arizona Water Company and ADEQ conducted monitoring for over 90 additional constituents and the results show none of those constituents were detected in the water. Data presented are from the

Public Notice

most recent testing done in accordance with applicable regulations. Some constituents are monitored less frequently than once a year because either their concentrations do not change frequently or they are not likely to be detected. Therefore, some of the water quality testing data contained herein, although representative, may be more than one year old. If you have questions about this water quality report, please contact Regina Lynde, Environmental Compliance Manager, Arizona Water Company, P. O. Box 29006, Phoenix, Arizona 85038-9006; telephone (602) 240-6860 or email mail@azwater.com.

In 2003, ADEQ completed a Source Water Assessment of the water sources used by Arizona Water Company's Superior water system. ADEQ reviewed the adjacent land uses that may pose a potential risk to the water sources. The result of the Assessment was a low risk to the water sources.

The complete Assessment is available for inspection at ADEQ, 1110 West Washington Street, Phoenix, Arizona 85007, between the hours of 8:00 a.m. and 5:00 p.m. Electronic copies are available from ADEQ at dml@azdeq.gov. For more information, visit ADEQ's Source Water Assessment and Protection Unit website at: www.azdeq.gov/environ/water/dw/swap.html.

The USEPA and ADEQ require Arizona Water Company to provide the following information:

Drinking water, including bottled water, may reasonably be expected to contain at least small amounts of some constituents. The presence of constituents does not necessarily indicate that water poses a health risk. More information about constituents and potential health effects can be obtained by calling the USEPA's Safe Drinking Water Hotline (800-426-4791).

Some people may be more vulnerable to constituents in drinking water than the general population. Immuno-compromised persons such as persons with cancer undergoing chemotherapy, persons who have undergone organ transplants, people with HIV/AIDS or other immune system disorders, some elderly, and infants can be particularly at risk from infections. These people should seek advice about drinking water from their health care providers. USEPA/CDC guidelines on appropriate means to lessen the risk of infection by Cryptosporidium and other microbial constituents are available from the Safe Drinking Water Hotline (800-426-4791).

The sources of drinking water (both tap water and bottled water) include rivers, lakes, streams, ponds, reservoirs, springs, and wells. As water travels over the surface of the land or through the ground, it dissolves naturally-occurring minerals and, in some cases, radiological material, and can pick up substances resulting from the presence of animals or from human activity.

Constituents that may be present in source water include:

- Microbials, such as viruses and bacteria, which may come from sewage treatment plants, septic systems, agricultural livestock operations, and wildlife.
- Inorganics, such as salts and metals, which can be naturally-occurring or result from urban stormwater runoff, industrial or domestic wastewater discharges, oil and gas production, mining, or farming.
- Pesticides and herbicides, which may come from a variety of sources such as agriculture, urban stormwater runoff, and residential uses.
- Organics, including synthetic and volatile organic chemicals, which are byproducts of industrial processes and petroleum production. They can also come from gas stations, urban stormwater runoff, and septic systems.
- Radiological material, which can be naturally-occurring or be the result of oil and gas production and mining activities.

In order to ensure that tap water is safe to drink, USEPA prescribes regulations which limit the amount of certain constituents in water provided by public water systems. FDA regulations establish limits for constituents in bottled water which must provide the same protection for public health.

If present, elevated levels of lead can cause serious health problems, especially for pregnant women and young children. Lead in drinking water is primarily from materials and components associated with service lines and home plumbing. Arizona Water Company is responsible for providing high quality drinking water, but cannot control the variety of materials used in plumbing components. When your water has been sitting for several hours, you can minimize the potential for lead exposure by flushing your tap for 30 seconds to 2 minutes before using water for drinking or cooking. If you are concerned about lead in your water, you may wish to have your water tested. Information on lead in drinking water, testing methods, and steps you can take to minimize exposure is available from the USEPA's Safe Drinking Water Hotline or at <http://www.epa.gov/lead>.

DEFINITIONS, ABBREVIATIONS, AND UNIT DESCRIPTIONS:

Action Level	=	The concentration of a constituent which, if exceeded, triggers treatment or other requirements which a water system must follow.
CDC	=	United States Centers for Disease Control and Prevention
FDA	=	United States Food and Drug Administration
MCL	=	Maximum Contaminant Level, the highest level of a constituent that is allowed in drinking water. MCLs are set as close to the MCLGs using the best available treatment technology as is economically and technologically feasible.
MCLG	=	Maximum Contaminant Level Goal, the level of a constituent in drinking water below which there is no known or expected risk to health. MCLGs allow for a margin of safety.
MRDL	=	Maximum Residual Disinfection Level, the highest level of a drinking water disinfectant that is allowed in drinking water
MRDLG	=	Maximum Residual Disinfection Level Goal, the level of a drinking water disinfectant in drinking water below which there is no known or expected risk to health. MRDLGs do not reflect the benefits of the use of disinfectants to control microbial constituents.
NA	=	None adopted
NS	=	No standard
pCi/L	=	Picocuries per liter
ppb	=	Parts per billion, or micrograms per liter (µg/l)
ppm	=	Parts per million, or milligrams per liter (mg/l)
PWSID	=	Public Water Supply Identification

Arizona Girls State marks 71st Session; Augie Hing represents Superior High School

It was a girl's week with nearly 300 high school girls from across Arizona converging on the University of Arizona campus for the 71st session of The American Legion Auxiliary premier program, American Legion Auxiliary Arizona Girls State. This "unique" opportunity is open to girls completing their junior year of high school that meet the necessary qualifications. The session ran from June 1 through 9, 2018. Attending from Superior High School was Augustine-Lou Hing.

American Legion Auxiliary Arizona Girls State is a weeklong program designed to educate young women in the functions of their government and kindle the desire to actively participate in and responsibly fulfill their role as citizens.

According to Penny Maklary, Girls State Director, "this is a week that shapes a lifetime." She explained that girls were housed in an original home to Girls State for

many years. State of the art, eco-friendly instructional classrooms throughout the university were assigned to the program this year. "Similar to past years," she went on to say, "we have senior staff that work as city and county advisors, while junior counselors return from the previous year's Girls State session, to assist Senior Staff in the education (and fun) process."

Arizona Girls State is comprised of 12 cities and 4 counties. There are 22 to 24 girls in each city and about 75 girls in each county. The girls are divided into two pseudo political parties called federalists and nationalists. Precinct committeemen watch over all elections and assist political parties. Each city elected a mayor and counsel; wrote their own ordinances and resolutions, passed a budget and a strategy for planning and zoning. Cities were assigned to a County and the educational process continued with campaigning and election to County

and State positions. During the span of the week, they conducted regular city and party meetings, wrote and debated bills, received instruction from actual elected state/county officials and "learned by doing". Midweek, they elected the prominent positions of Governor and Secretary of State. The girls elected to these two positions, will return to preside over the 72nd session of Arizona Girls State.

Culminating the week was the election of two delegates

Continued on page 9

SOCIAL SECURITY DISABILITY

Denied Benefits? Unable To Work? We Can Help!

- 1 Do you qualify for disability benefits? Call for a **FREE** evaluation
- 2 Advocating on your behalf with applications, appeals & hearings
- 3 We simplify the process & strive for quick claim approval*

Helping 1000s Get The Benefits They Deserve

Call for a Free Consultation



(844) 322-6407

Bill Gordon & Associates, a nationwide practice, represents clients before the Social Security Administration. Member of the TX & NM Bar Associations. Mail: 1420 NW St Washington D.C. Office: Broward County, FL. Services may be provided by associated attorneys licensed in other states.

*The process for determining each applicant's disability benefits varies greatly, and can take upwards of two years.

"Do You Have an Idea for an Invention?"

- ✓ We help everyday Inventors patent and submit their ideas to companies.
- ✓ Put our 30 years of experience to work for you!



For FREE Information Call

877-368-8345

INVENTHELP®
HELPING INVENTORS SINCE 1984

Copyright © 2018 InventHelp®

DENTAL Insurance



Physicians Mutual Insurance Company

A less expensive way to help get the dental care you deserve

- ✓ If you're over 50, you can get coverage for about \$1 a day*
- ✓ Keep your own dentist! You can go to any dentist you want
- ✓ No wait for preventive care and no deductibles – you could get a checkup tomorrow
- ✓ Coverage for over 350 procedures – including cleanings, exams, fillings, crowns...even dentures
- ✓ NO annual or lifetime cap on the cash benefits you can receive

FREE Information Kit

1-844-817-2794

www.dental50plus.com/az



*Individual plan.
Product not available in MN, MT, NH, NM, RI, VT, WA. Acceptance guaranteed for one insurance policy/certificate of this type. Contact us for complete details about this insurance solicitation. This specific offer is not available in CO, NY; call 1-800-969-4781 or respond for similar offer. Certificate C250A (ID: C250E; PA: C250D); Insurance Policy P150 (GA: P150GA; NY: P150NY; OK: P150OK; TN: P150TN)
6096E-0917 MB17-1M008E-C

MobileHelp

MobileHelp Duo Annual Plan

- Includes:
- 1 FREE Month
 - FREE Shipping
 - FREE Lockbox
 - 2 FREE Help Buttons



Call for a **FREE Brochure!**

1-877-625-0954



MEDIA RELEASE

Powered by the PRESS



TARGET:

Newspapers • Radio
Television

COMPLETE:

Affordable • Fully Searchable
Intuitively Simple

www.PRMediaRelease.com/Arizona

In Partnership with the
Arizona Newspapers Association

Enter To **WIN**
\$4,000

\$100 awarded weekly \$3,000 Grand Prize
Newspaper sponsored - Local shopping survey



Enter to win now, go to:

www.pulsepoll.com

In your Biz

At the corner of Main St. and Lobb Ave. in the Porter's Building complex, there is a treasure trove of nostalgia and history, Picket Post Antiques. The store is owned by Kelli Elliot and her husband Clint.

Kelli was first exposed to antiques and collectables by her mother-in-law. At first she was not too into hunting for antiques but as the history bug caught her, she was hooked.

"I realized that I loved all the unique things in her home and how comfortable her home felt. Now my kids' friends say the same thing, they love to come and look at all we have collected over the years," she said.

They opened the store about a year ago, after waiting for the right opportunity in Superior. She had opened a store in the valley, and called it Picket Post antiques,

most thought that she called it Picket Post because of picket fences, but she had really named her business after her love of Picket Post mountain. She and her husband waited, stayed patient and at just the right moment the perfect spot for their antique store opened up in the Porter's Building.

"Antiques should be sold in an old building" she gleefully explained. She had been dreaming of one day opening her store in Superior. She got her wish, the Porters Building was actually built in 1917. One of the best perks for her, of owning this business, is talking with the locals. While she admits, not every day has a lot of sales, she does enjoy the visits of the locals who come in to tell her stories about Superior.

Inside of Picket Post Antiques, you will find an assortment of vintage and antique items. From kitchen items like Pyrex bowls, furniture, clothing, signs and even unique items like holiday decor along with old gates and windows that could be used for those do it yourself vintage projects. There are about twenty three dealers who sell out of her store, and she is very particular to ensure that items are not refinished or are new items made to look old. She will also buy from those who have items that they

Continued on page 10

Picket Post Antiques



Kelli Elliot of Picket Post Antiques

The "In Your Biz" column is sponsored weekly by the Superior Chamber of Commerce in an effort to further promote their business members. To learn more about the Superior Chamber of Commerce you can visit their website www.superiorarizonachamber.org or call them at 520-689-0200. The Chamber meets the third Wednesday of every month at their building 165 Main St. in Superior, Arizona. Those planning on attending the Chamber luncheons do need to RSVP prior to the meeting, please call Deb McKee to RSVP at 520-827-1773.

Articles compiled by Mila Besich-Lira for Superior Sun - Copper Area News Publishers.

Download Our
App Today!



Inside the CV Superior Clinic!



Come take a look at our selection of
Over-the-Counter Medications!

We Accept Most Insurances

Ask About Low Cash Prices!



Your hometown Pharmacy,
feeling better starts here.



ScriptCenter
Gives customers a
faster way to pick
up prescriptions,
even when the
Pharmacy is closed!

ScriptCenter Hours:
Monday - Friday
7:00am - 5:00pm

1134 W US Highway 60 Superior, AZ (520) 689-2423

We Price Match!

Ask Your Doctor to Electronically Send
Your Prescriptions Straight to Us!

Hours Of Operation:

Monday - Friday 2:00 pm - 4:00 pm

Saturday 8:00 am - 2:00 pm



Check us out on
www.cvpharmacy.org

Supervisors adopt tentative budget/tax cut; primary property tax to drop from \$3.6999 to \$3.63

FLORENCE, AZ - Pinal County residents will see nearly a four cent drop in their primary property taxes after the Board of Supervisors unanimously approved the 2018/2019 fiscal year budget in Wednesday's meeting.

"I am pleased to see we are able to drop the tax rate," stated Chairman Todd House. "It's been an ultimate goal of mine since I have been on the Board of Supervisors. There have been past circumstances that have made it hard to do, but we are at a good point now where we can offer this to our citizens."

The tentative budget, adopted in the meeting, is \$451,709,402.

"We have several future capital projects such as the new Justice Courts that need to be renovated or built," said County Manager Greg Stanley. "This is why the overall budget has increased by

\$45.6 million."

In accordance with state law, once the tentative budget is adopted it cannot be increased. Although it can be decreased or reallocated.

Highlights from the Tentative Budget presentation:

- New construction valuation was modest over 2017/2018 with a 2.5 percent increase (\$58.3 million)
- General Fund excise tax related revenue growth is trending strong at 7 percent over the year with the final quarter still remaining
- General Fund Financial Stability Reserve estimated to be 15 percent at the end of the fiscal year
- Enhancement of services by \$4.1 million thanks to reallocations and increases in the General Fund

The Supervisors will adopt the final budget later this month.

Studio 48 - Arizona Film Commission topic of Next Rural by Choice Forum

The Copper Corridor Economic Development Coalition and the Southern Gila County Economic Development Corporation have teamed up to host one of their signature Rural by Choice forums. This forum will include a presentation by Matthew Earl Jones who is the director of the Arizona Film Commission. The forum is scheduled for Tuesday, July 19, 2018 at the Superior Town Hall located at 199 Lobb Ave. Registration will open at 9:30am with the forum beginning at 10 a.m. to 11:30 a.m.

Jones is the Director of Studio 48, the new film commission for the State of Arizona. The commission is tasked with implementing an incentive program to attract the film industry back to Arizona. His presentation will include ways for local businesses to participate in the film incentive program.

Following the forum, the two economic development organizations will provide a private tour for the director and his staff to promote the region as a place to film.

For more information on this Rural by Choice Forum or the other programs sponsored by SGCEDC and CCEDC please contact azccedc@gmail.com or 520-490-8433.

Need more information?
Please contact Mr. O'Neal
at mo'neal@cvit81.org

928-242-1907

NEW PROGRAM- CVIT

Stage Craft



Where: Gila Community College- Gila Pueblo Campus

When: Classes start in August 2018

Who: High School age students from Superior, Globe, Miami, San Carlos, Kearny, Hayden-Winkelman (must be at least in 10 grade in 2018-2019 school year)

How: applications are available in counselors offices (all applications will be processed by a counselor first, please do not mail packets to CVIT directly or to the College)

How long: 1 year program

What do I learn: Eastern Arizona College Certificate of proficiency and/or industry certification.

Reclamation Project Update

Please join us for a public meeting
Tuesday, June 19, 2018 at 6pm
Superior Chamber of Commerce
165 Main St.
Superior, AZ 85173

NOTICE
AUTHORIZED
PERSONNEL ONLY
SOIL RECLAMATION
IN PROCESS

RESOLUTION
COPPER

THIS 'N THAT

COMMUNITY CALENDAR

St. Francis 100th Anniversary

St. Francis of Assisi Catholic Church is celebrating its 100th Anniversary this year and is looking to compose the church history. Anyone who can help with pictures, information or any other historical materials is asked to please contact the church office at 11 Church Avenue or by calling 520-689-2250.

Arboretum Summer Hours Begin

May's the month when Summer hours resume, daily through the end of September the Arboretum is open from 6 a.m. to 3 p.m., with no entry after 2 so each day's final visitors have one full hour to explore and enjoy the gardens and trails. Confirm BTA weekend nature walks, dates and times at cals.arizona.edu/bta; connect with more than 10,000 fans at facebook.com/btarboretum

Superior Senior Center News and Menu

The Superior Senior Center, 360 W. Main St., invites seniors to join the center and enjoy a nice meal and great company. Meals are \$2 for adults 55 and over. Under 55 is \$4.

Bingo is every Tuesday and Thursday at 10:30 a.m. A pastry bingo is held on the last Thursday of the month beginning at 10 a.m. All are welcome.

Need a ride to the center or more information? Call 689-5182.

On the menu this week:

Thursday – Hungarian goulash, steamed carrots, roasted zucchini, wheat dinner roll, fresh fruit cup.

Monday – Brats w/bun, sauerkraut, potato wedges, corn, root beer float.

Tuesday – Turkey pot pie, Italian vegetables, green beans, honeydew.

Wednesday – Salad station, broccoli cheddar soup, wheat dinner roll, pears.

21 Eagle One Veteran Outreach to Visit

The Eagle One Veteran Outreach Center will be at the VFW in Superior on Thursday, June 21, from 10 a.m. to 2 p.m. Visit them online at hohp4heroes.org. Eagle One provides veterans a place to learn about and apply for all services available to them.

23-24 Herbalist to Visit BTA

Sedona herbalist Feather Jones hosts creative workshops in making salves, teas and wild herb infusions from native plants. BTA is pleased to offer a special weekend June 23-24 with back-to-back guided morning walks which will explore the Curandero Trail and our Herb Garden during the earliest and coolest hours while our gardens are most pleasant – followed by workshops in the air-conditioned lecture room where the herbalist will coach enrollees Saturday (Desert Herbs to Support the Immune System) & Sunday (Allergies and Desert Plant Allies). Feather's guided walks will begin each morning at 6:30 a.m. and last about 90 minutes; they're included with \$12.50 admission; free to BTA annual members and AZ State Parks pass-holders. Classes each day are \$30, with pre-registration required.

28-29 Food Box Distribution

The June food box distribution at the Superior Food Bank is on June 28 and 29. Please note that we are on the summer time schedule for June, July and August. We will open the doors at 6:00pm each day, Thursday and Friday. Also, the normal first Wednesday delivery will occur on July 5 - Thursday morning.

ON THE AGENDA

SUPERIOR TOWN COUNCIL: The Superior Town Council meets the second Thursday at 7 p.m. at the old Roosevelt School Auditorium.

SUPERIOR OPTIMIST CLUB: The Superior Optimist Club meets the first and third Tuesdays at Edwardo's Pizza at 6:30 p.m. Anyone wishing to join the club can contact JoAnn Besich at 520-827-0592.

SUPERIOR SENIOR CENTER: The Superior Senior Center is open Monday through Thursday from 8 a.m. to 2:30 p.m. A hot nutritious lunch is provided at noon. Bingo is played every Tuesday and Thursday starting at 10:30 a.m. Come in and join us for lunch or Bingo. You do not need to be a senior to join us, but must be over 21 to play Bingo. Need a ride to the center? Call 520-689-5182.

SUPERIOR ROTARY CLUB: The Superior Rotary Club is the oldest service club in Superior that is still in service today. If you are interested in becoming a Rotarian, please call the school district for the next meeting date, 689-3000.

SUPERIOR SCHOOL BOARD: Regular meetings of the Superior School District Governing Board are held at 6 p.m. in the Auditorium, at Kennedy Elementary School, 1500 Sunset Drive in Superior, usually on the first Wednesday of each month.

ANNOUNCEMENTS

Superior Head Start Registration

Head Start is taking applications now for the upcoming 2018-19 school year. Applications may be completed online at: www.pgccs.org Families must provide proof of income, guardianship and immunizations. Head Start is a free pre-school program that prepares children ages 3 and 4 years for kindergarten and promotes school readiness skills for children and their families. Children receive free healthy meals and if qualify, may receive free medical and dental care. Head Start provides classroom experiences to support parenting challenges and individualized services to children with disabilities. Transportation is not available. Superior Head Start is located at 150 N. Lobb Ave. Call site manager, Hilda Cardenas, 520-689-2812 for more information.

Play Bingo in Miami

In 2018, Bingo at Our Lady of the Blessed Sacrament Church on Sullivan St. in Miami will be held on the first and third Tuesday of the month. Those over age 18 are welcome to join in, starting at 6 p.m., with doors opening at 5 p.m. There will be three Early Bird games and then the rest of a 21 game pack. Packs are \$19 per player. There will be a snack bar. If you would like more information about CDA or Bingo, please contact Mary Stemm, Regent via email atjmstemm@cablone.net.



Bob Jones Museum Hours

Bob Jones Museum will be closed for the summer months of June, July and August. The Museum will be open for Second Friday events.

Submit information to CBNSUN@minersunbasin.com or call 520-363-5554. Listings are free. The Superior Sun reserves the right to edit or refuse submissions. Submissions are due the Friday before Wednesday publication.

JUNE 19 Resolution Copper Public Meeting

Resolution Copper is hosting a public meeting at Superior Chamber of Commerce on Tuesday, June 19, 6 p.m. to provide a project update on reclamation at our West Plant property adjacent to Superior, which includes the Magma Smelter complex. Contractor WestLand Resources will present several points of interest regarding Superior's mining history and the handling of historical architecture. Residents will also be able to ask any questions they have about reclamation or the mine in general. For more information, visit us online at: resolutioncopper.com/shape-whats-next/west-plant-reclamation/.

CWG to show mine subsidence video on June 13

The next meeting of the Town of Superior Community Working Group (CWG) will be held Wednesday, June 13, 2018 at 6 p.m. in the Superior Chamber of Commerce meeting room. Resolution Copper Company will present a video simulating development and subsidence of the mine site. The group will also continue its discussion of how to preserve the community's historic cultural legacy. Superior area residents are encouraged to offer suggestions at: <http://superiorazcwg.org/comment-form/>
The CWG includes residents and stakeholders from

the Town of Superior, Queen Valley, Hewitt Station, Globe, the San Carlos Community and around the area. The group deals with the social and environmental issues, science and policy, and the pros and cons of the proposed Resolution Copper Project. Topics include environmental impacts, health, safety, natural resource issues, engineering, water quantity and quality, geology, economics, air quality, community investments, recreational changes and other related subjects.
Meetings are held at the Superior Chamber of Commerce

at 165 W. Main St. in Superior from 6-8 p.m., most often on the second Wednesday of each month. The public is welcome, and time is reserved on the agenda for everyone's comments, questions, and discussion.
More information about the CWG as well as agendas, meeting summaries, and past presentations are available for public review at the Superior Chamber of Commerce offices and at the Superior Public Library at 99 North Kellner Avenue, as well as online at <http://SuperiorAZCWG.org/>

GIRLS STATE

Continued from page 5

as senators to attend the prestigious Girls Nation held the following month in Washington, DC. Girls Nation is an all-expense-paid week with other girls elected State Senators from across the nation. They will debate federal issues they present as bills, visit the Pentagon, Arlington National Cemetery, the White House and other memorials in the nation's capital. Another opportunity that is truly a "once in a lifetime experience"!

For more information on Girls State or the American

Legion Auxiliary contact the Auxiliary Unit located in your city or the American Legion Auxiliary Department of Arizona at 602-241-1080.

Brief History

Girls State was organized as a national Americanism activity by the 1937 American Legion Auxiliary National Convention. A national committee to direct the program was created by the 1946 American Legion Auxiliary National Convention. Girls State is a practical application

of Americanism and good citizenship. The entire program is non-partisan and nonpolitical.

Sponsorship

The Girls State program is sponsored by the Units of the American Legion Auxiliary. Each Unit sponsors girls from assigned high schools in their area. Girls State is solely sponsored by The American Legion Auxiliary; however, we do have outside contributors that donate each year to the program.

COPPER BASIN & SUPERIOR CHURCH DIRECTORY

Fellowship Baptist Church

Tilbury & Danbury, Kearny

Pastor Joe Palmer
520-363-5434

Sunday School 9:30 a.m.
Worship Service 10:45 a.m.
Tuesday Morning Fellowship 10 a.m.
Wednesday Dinner & Bible Study 6-7 p.m.
Friday Kids' Club 1-2:30 p.m.

Church of the Good Shepherd

Bottom of School Hill, Kearny

Rev. Michael Eaton
520-363-7283

www.thegoodshepherd.pbworks.com

Sunday Worship 9 a.m.

UMC in cooperation with the Episcopal Church & the Evangelical Lutheran Church of America

We stand in awe of God and of one another

Lighthouse Assembly of God

Hwy. 77, MP 134, 1/2 mi S of Winkelman

Pastor David Wade
520-356-6718

Worship Service 9 & 11 a.m.
Evening Worship 6:30 p.m.
Wednesday Family Night 7 p.m.

We Welcome You!
www.YourLighthouseFamily.com

Presbyterian Church of Superior

100 Magma Ave., Superior

520-689-2631

Worship Service Sunday: 10 a.m.
All are welcome.

Anonymous prayer box located at Save Money Market. We will pray for you!

St. Francis of Assisi Catholic Church

11 Church Ave., Superior

Fr. Samuel Jandeh
520-689-2250

Weekday Mass Tues.-Fri. 8 a.m.
Saturday 5 p.m. • Sunday 9 & 11 a.m.
Confession: Sat. 4-4:45 p.m. or by req.
www.stfrancissuperior.org

Kearny Church of Christ

103 Hammond Dr., Kearny

520-363-7711

Sunday Bible Study 10 a.m.
Sunday Worship 11 a.m.
Evening Worship 6 p.m.
Wednesday Bible Study 7 p.m.

Serving All of the Copper Basin Area

Living Word Chapel Copper Corridor

Casual, Relevant, Contemporary

Pastor James Ruiz
520-896-2771

Join us 5 p.m. at Hayden High School
www.lwcoracle.org
Find us on Facebook @
Living Word Chapel Copper Corridor

San Pedro Valley Baptist Church

Dudleyville Road, Dudleyville

Pastor Anthony DaCunha
520-357-7353

Sunday School 9:45 a.m.
Morning Worship 11 a.m.
Evening Service 6 p.m.
Wednesday Prayer Meeting 7 p.m.

Superior Harvest Church

Hill St. & Stone Ave., Superior

Pastor Albert M. Rodriguez
480-354-4499 H
480-329-3647 C

Sunday Morning Service 10 a.m.
Wednesday Bible Study 5 p.m.

Victory in Jesus

Family Life Christian Center

56 Kellner Ave., Superior

Pastors Dennis & Sandy VanGorp
520-689-2202

Sunday Prayer 9:30 a.m.
Sunday Worship 10:30 a.m.
Wednesday Bible Study 6 p.m.

Everyone is Welcome Assembly of God

Calvary Kearny

305 W. Croydon Rd., Kearny

Pastor Ron Hazelwood
520-365-0636

Sunday Worship Service 10 a.m.
Wednesday Bible Study 7 p.m.

www.calvarykearny.com

Come & See!

Infant Jesus of Prague Catholic Church

501 Victoria Circle, Kearny

Rev. Fr. George Kunnel (Pastor)
520-363-7205

Daily Masses Tues 5:30 p.m.; Wed-Fri 8:30 a.m.
Saturday Vigil 5:30 p.m.; Sunday Mass 9 a.m.
Sunday Religious Ed for Children, Youth Ministry & Jr. High Youth Groups 10:15 a.m.

To be included in the weekly church listing,
call 520-363-5554 or email at
cbnsun@minersunbasin.com.

ANTIQUES

Continued from page 6

think are antiques.

What makes Picket Post Antiques stand out from other antique stores, is the love that Kelli and Clint have for history. The two volunteer for many of the history based events in Globe and Miami.

"I am fascinated by the history of these communities, Superior, Globe and Miami. I love volunteering in these communities because everyone is so nice and proud of their local history" she explained. Kelli hopes to glean more local history stories of Superior to help preserve the unique history of Superior. "I can't get enough of it," she explained.

Picket Post Antiques is open 11 a.m. to 5 p.m. Wednesday through Sunday during the Summer. In September, they will resume fall/winter hours and open Tuesday through Sunday.

Weather

Date	High	Low	Pcp
June 4	n/a	n/a	
June 5	104	66	
June 6	104	67	
June 7	104	64	
June 8	107	65	
June 9	107	68	
June 10	104	68	

Weather readings
courtesy Boyce
Thompson Arboretum.

SHOP LOCAL.
BUY LOCAL.

(520) 385-2266 & (520) 363-5554

Buy Online: bit.ly/2kcmZaP

CLASSIFIED

Deadline Friday 5 pm



1. Automobile

DONATE YOUR CAR TO CHARITY. Receive maximum value of write off for your taxes. Running or not! All conditions accepted. Free pickup. Call for details. 866-932-4184 (AzCAN)

WANTED Old SportsCars/Classics: Porsche, Mercedes, Jaguar, Triumph, Ferrari, Corvette & more! 1973 & OLDER! ANY condition! TOP \$\$ PAID! Call/Text: Mike 520-977-1110. I bring trailer & cash! (AzCAN)

Call
520-385-2266 or
520-363-5554
to place your ad.

10. Business Services

**Connie's
Barber Shop**
896-3351
Hours 9-5
620 E. American Avenue #D Oracle, AZ

20. Help Wanted

10. Business Services

PRINTING

Letterheads * Envelopes * Business Cards * Flyers *
Business Forms * Copies Newsletters *
Programs * Brochures Rubber Stamps * Wedding
Announcements Graduation Stationery * Posters
Door Hangers * Raffle Tickets
Copper Basin News
366 Alden Rd. Kearny
(520) 363-5554
CbnSun@MinerSunBasin.com

16. Financial Services

Over \$10K in debt? Be debt free in 24-48 months. Pay a fraction of what you owe. A+ BBB rated. Call National Debt Relief 866-541-6885. (AzCAN)

Fed Up With CREDIT CARD DEBT?
CONSOLIDATED CREDIT Can Help
Reduce Interest Rates & Get you out of
DEBT FAST... FREE Consultation. 24/7
Call Now: 877-303-8679 (AzCAN)

50. Mobile Homes

16. Financial Services

Unable to work due to injury or illness?
Call Bill Gordon & Assoc., Social Security
Disability Attorneys! FREE Evaluation. Local
Attorneys Nationwide 1-844-219-0474 [Mail:
2420 N St NW, Washington DC. Office:
Broward Co. FL (TX/NM Bar.)) (AzCAN)

18. Fitness/Beauty

OXYGEN - Anytime. Anywhere. No tanks
to refill. No deliveries. The All-New Inogen
One G4 is only 2.8 pounds! FAA approved!
FREE info kit: 844-843-0520 (AzCAN)

20. Help Wanted

The Superior Sun
is seeking carriers
for various
routes
in
Superior.
Call 480-620-5401.
Ask for James.

50. Mobile Homes

20. Help Wanted

ADVERTISE YOUR JOB Opening in 55 AZ
newspapers. Reach almost a million readers
for ONLY \$330! Call this newspaper or visit:
www.classifiedarizona.com. (AzCAN)

Jobs Available

Check the
Classified!

PLUMBERS NEEDED

Tucson Plumbing Co.
is currently looking
for plumbers. 5+ years
experience. Will help with
moving expenses. \$500 bonus
after 6 mos employment.
Health, Retirement, FREE
dental & vision.
Call (520) 248-9088

50. Mobile Homes

35. Livestock

5 Cattle (Heifers) for
sale. \$3500 takes all.

520-357-6135 or
928-200-2729

45. Misc.

Have an idea for an invention/new product? We
help everyday inventors try to patent and submit
their ideas to companies! Call InventHelp®,
FREE INFORMATION! 855-424-4879 (AzCAN)

KILL SCORPIONS! Buy Harris Scorpion
Spray/Odorless Effective results begin after
spray dries. Available: Hardware Stores, The
Home Depot, homedepot.com (AzCAN)

DIRECTV SELECT PACKAGE! Over
150 Channels, ONLY \$35/month (for 12
mos.) Order Now! Get a \$100 AT&T Visa
Rewards Gift Card (some restrictions
apply) CALL 1-844-244-7498 (AzCAN)

DISH TV \$59.99 For 190 Channels \$14.95
High Speed Internet. Free Installation, Smart
HD DVR Included, Free Voice Remote. Some
restrictions apply. Call 1-855-722-2290 (AzCAN)

50. Mobile Homes

Rancho San Manuel Mobile Home & RV Park

Best rates ... include cable, sewer &
garbage. Plus, with deposit &
1st month's rent, receive a 32" TV.

FOR RENT

Address

416 Encina, 1bd/1ba.....\$450

517 Ladera, 3bd/2ba\$675



RVS WELCOME

For more info. our office is located at:
402 San Carlos St., San Manuel, AZ 85631
Contact Gabriel Mendez at 520-385-4007

Check us out on Facebook @ RanchoSanManuelMobileHomePark
Lic. #F17709

MOBILE HOME FOR SALE



One thousand dollars can move you into this
24x50 3 bedroom, 1 ¾ bath mobile home
with storm windows. The ¾ bath includes
handicapped walk in shower. Furnace was new
in 2001. Roof was totally re-coated 2-3 years
ago. 8X10 metal shed on side and 8x8x16
wooden shed in rear. Wooden shed has power
to it. It also leaks.

Home to be available on June 1.
Payments \$200/mo. (no interest if monthly
payments are paid on time). \$40 fee if payment
is late. Must pass background check to live in
park. Total price is \$5,000 or best cash offer
over \$2,000.

Email offer to johnlwinslow@gmail.com

Address for Sale:
313 E. Madera St, San Manuel, AZ 85631

Seller's New Address:
John L. Winslow
4648 S. Goldenrod Pl., Tucson, AZ 85730
520-279-0755

(520) 385-2266 & (520) 363-5554 Buy Online: bit.ly/2kcmZaP

CLASSIFIED

Deadline Friday 5 pm

**45. Misc.**


A PLACE FOR MOM has helped over a million families find senior living. Our trusted local advisors help find solutions to your unique needs at NO COST TO YOU! CALL 877-596-6910 (AZCAN)

BATHROOM RENOVATIONS. EASY, ONE DAY updates! We specialize in safe bathing. Grab bars, no slip flooring & seated showers. Call for a free in-home consultation: 855-669-5341 (AZCAN)

Lung Cancer? And Age 60+? You And Your Family May Be Entitled To Significant Cash Award. Call 844-545-5172 for Information. No Risk. No Money Out Of Pocket. (AZCAN)

70. Personal

Congratulations,
Angelita (Cat)
Mendibles on your five
well deserved awards
at your promotion from
8th grade. You worked
hard and had exemplary
grades. We are very
proud of you.
Your Williams/
Mendibles
Families


80. Rentals**Oracle Apartments**

1256 W. Neal St., Oracle, AZ 85623

"Good things are happening!"

39 modern 1 & 2 bedroom apartments for individuals, families and seniors, families, and disabled. Subsidy depending on availability and eligibility. Certain income restrictions apply. Federally subsidized.



- On-Site Managers Office
- On-Call Maintenance
- Playground/Basketball Hoop
- 30 Minutes from Tucson
- Lease, Security Deposit Required

This institution is an equal opportunity provider and employer.

An equal opportunity employer, committed to ensuring non-discrimination in all terms, conditions and privileges.

For information and application, come in or call (520) 896-2618
T.D.D. (800) 842-4681

Office Hours:
Wednesday-Thursday
9 a.m.-2 p.m.



80. Rentals**Dalton Realty**
520-689-5201

Superior, Kearny & Top of the World Rentals

FOR RENT

**HOMES: Two & Three Bedroom
with Carpet, Stove, Refrigerator
& Fenced. 385-2019**

**SAN MANUEL
LODGE**
520-385-4340**HOTEL
LODGE
MINI STORAGE
APARTMENTS****100. Real Estate****100. Real Estate**

NORTHERN AZ WILDERNESS RANCHES \$193 MONTH. Quiet very secluded 37 acre off grid ranches. Many bordering 640 acres of uninhabited State Trust woodlands at cool clear 6,100' elevation. No urban noise & dark sky nights amid pure air & AZ's very best year-round climate. Blends of evergreen woodlands & grassy wild flower covered meadows with sweeping views across scenic wilderness mountains and valleys. Abundant clean groundwater at shallow depths, free well access, loam garden soil, maintained road access. Camping and RV use ok. Near historic pioneer town & fishing / boating lake. From \$22,500, \$2,250 down, with no qualifying seller financing. Free brochure with photos, property descriptions, prices, terrain map, lake info, weather chart/area info: 1st United Realty 800.966.6690. (AZCAN)

ADVERTISE YOUR HOME, property or business for sale in 55 AZ newspapers. Reach almost a million readers for ONLY \$330! Call this newspaper or visit: www.classifiedarizona.com. (AZCAN)

FOR SALE

2 ADJACENT LOTS, 1
DWELLING W/UTILITY H/U
VALUED AT 45K, REQ. 40K/OBO
673 SAN PEDRO AVE., HAYDEN
Ramon Romero 520-433-0843

Find your next
house or rental
in the classified!

100. Real Estate

Looking for a NEW home? *Many great properties to see.*
Call a Realtor today!

Amy WHATTON REALTY

PHONE: 928-812-2816
EMAIL: WHATTONA@GMAIL.COM

*Helping families find their
dream homes since 1986.*

SAN MANUEL

- **211 Avenue D** 3 bdrm 1 3/4 ba home with great views and beautiful trees and shrubs. Inside includes newer appliances; stove, refrigerator, microwave, washer and dryer. Ceramic tile flooring. 2 sheds. Some personal property will be included with the sale. \$120,000
- **REDUCED -927 6th Ave.** 3 bdrm 1 3/4 ba home with block retaining wall and block wall in back. Ceramic tile flooring, upgraded kitchen and baths, A/C, appliances and so much more. \$108,000
- **REDUCED -215 4th St.** 2 bdrm 1 ba home on lg. corner lot. Remodeled inside and out with new paint, ceramic tile and wood flooring, new appliances, and fixtures. Includes bonus room for bdrm, crafts, office. Fenced back yard w/gorgeous mountain views. Must see! \$89,900
- **1001 Webb Dr.** 3 or 4 bdrm 2 bath home w. great views, lg. corner lot, great workshop, fenced yard, concrete circle drive, bonus rooms for entertaining or laundry. Appliances included. Must see! \$99,500
- **110 Douglas** Beautiful home w. 3 bdrm and 2 ba, large family room w. fireplace. Includes appliances, Updated kitchen and baths, new flooring. Views galore! \$129,900
- **907 1st Ave.** 3 bdrm 1 3/4 ba home with detached garage. Backs to desert and has a brick fireplace in back. Wood look tile and ceramic tile flooring, stainless appliances. Fenced back yard. Must see! \$111,000
- **202 5th St.** 5 bdrm 3 bath home with large family room, built in cabinets, block wall, and gorgeous views. \$100,000
- **REDUCED -312 5th St.** 3 Bdrm 1 3/4 Ba home with great mountain views. Completely remodeled with new kitchen and baths, new flooring, new paint inside and out. Must see! \$109,900
- **908 2nd Ave.** 3 bdrm 1 3/4 bath with enclosed extra room for laundry. Remodeled bathrooms, refrigerator and stove, freshly painted inside. 24' X 24' block garage/workshop. Great views! \$97,500
- **932 5th Ave.** 4 bdrm 2 bath on large corner lot. Remodeled home with ceramic tile flooring. Includes appliances. Must see! \$102,000
- **REDUCED - 330 McNab Pkwy.** 4 bdrm 2 ba. home. Previously used as office space. Could be used as home or office. Large corner lot. So much potential here. Must see! \$59,000

MAMMOTH

- **110 N. Catalina** Beautiful slump block home on large lot with a commercial building, currently a beauty shop. This 3 bdrm 2 1/2 bath has a family room w. fireplace, finished basement, block wall, covered back patio and so much more. Must see! \$185,000
- **19931 S. Sterling** Beautiful Santa Fe style home. 3 Bdrm 3 baths with huge living room w. fireplace, large kitchen, family room w. fireplace, double car garage and 5 acres of beauty. Has own well. Must see! \$480,000

DUDLEYVILLE

- **78370 E. Church St.** 3 bdrm 2 ba home on 1 acre. Vaulted beam ceiling and appliances. Fenced and has its own well. Carport and bonus room. Several sheds. Must see! \$155,000

Amy Whatton Broker
(928) 812-2816

Helen Knudson Sales Assoc.
(520) 235-7086

**Oracle Foothills Realty**

www.oraclefoothillsrealty.com

Office in Oracle since 2005



Roger D. Douglas
Broker

Office: 520-896-2498

Fax: 520-896-2496

Mobile: 928-919-2788

Roger@OracleFoothillsRealty.com

ORACLE	ARAIPA	ORACLE	DUDLEYVILLE	ORACLE	DUDLEYVILLE
					
4 acres - Home, guest quarters, garage.	Aravaipa Creek - 1.56 ac., borders State Land, pvt. well, septic, 5 RV Sites	Camino Yucca - Custom, many extras. Owner/ Agent.	25 acres - 3bd/2ba. MUST SEE!!	Chaparral - 3bd/3ba, fireplace, family room.	Church St. - 1.0 ac, Guest Quarters, Fenced.
\$499,000	\$75,000	\$265,000	\$249,000	\$184,900	\$155,000

LAND FOR SALE IN ORACLE

- Campo Bonito 20 ac. \$30,000
- Rockcliff 2.5 ac, Alice Dr. \$65,000
- Campo Bonito 5.0 ac, Milky Way. \$85,000
- Campo Bonito 5 ac, Hugget Tr. \$89,000
- Campo Bonito 4.0 ac, well share, Gold Bug. \$55,000
- American Ave. .50 ac, Utilities, CR-2. \$75,000
- Campo Bonito 4.0 ac, Gold Bug. \$50,000
- Campo Bonito 2-2.5 ac, Hugget Tr. 3 lots \$25,000-\$30,000

We also have all homes, acreage and building sites available through MLS (Pinal & Pima County).

FAX - COPIES - NOTARY SERVICES AVAILABLE BY APPOINTMENT



Members of the "TARMLS & COMMUNITY ASSOCIATION INSTITUTE (CAI)"

BEAT THE SUMMER HEAT

At McSpadden Ford – Home of the No Doc Fees

NEW! 2017 Ford F-250

Stk #13169



MSRP \$66,395.00
 McSpadden Ford Discount \$2,938.74
 Rebate \$1,500.00
Your Price \$61,956.26

2015 Ford Edge SEL

Certified Pre-Owned
 Stk #13065A



Was: \$25,900.00
NOW \$24,900.00

2015 GMC Acadia SLE

Stk #13252M



Was: \$25,000.00
NOW \$22,500.00

2014 Chevy Camaro SS

Stk #13252A



Was: \$25,500.00
NOW \$24,900.00

2015 Ford Explorer

Stk #13299



Was: \$30,500.00
NOW \$30,000.00

2008 Ford F-350

Special Wholesale Pricing
 Stk #13361A



Was: \$17,990.00
NOW \$14,958.00

Let us fill your “New Trunk” with Groceries! Buy any new or preowned vehicle in June & receive a gift certificate for FREE Groceries!

Ask about our Preferred Customer Complementary Oil Change Service!

McSpadden Ford is proud to support our local mine employees!

McSpadden FORD offers X-Plan to all eligible Mine Employees!!

McSpadden Ford, Inc.



“You’ll Like the Way We Do Business”

Like us on Facebook

WWW.MCSPADDENFORD.COM

*Price does not include tax, title, or license.



LINCOLN

**Sales (928) 425-4491
 (888) 485-6016**

**910 North Broad St.
 Globe, Arizona**