

Pinal **NUGGET**

March 2017
Volume 10 Number 5

FREE

**CALENDAR
OF
EVENTS**
pages 14-15

The Artistry of
Jennifer Cude,
pages 8-10

Photo by Angelina Bauer

A community publication of Copperarea.com



Oracle State Park to host a Star Party March 18

It's been two years since Oracle State Park received designation as an International Dark Sky Park, recognizing dark skies as a limited resource needing protection, and the whole park will be celebrating Oracle as an exceptional place for telescope-viewing on Saturday, March 18!

STAR PARTY

The Oracle State Park will host a Star Party March 18 to celebrate two years as an International Dark Sky Park.

NUGGET

Covering the Copper Corridor Communities of Globe, Miami, Superior, Kearny, Hayden, Winkelman, Dudleyville, Aravaipa, Mammoth, San Manuel, Oracle, SaddleBrooke and Catalina.

James Carnes.....Publisher
Jennifer Carnes..... Managing Editor
Michael Carnes.....General Manager
Mila Besich-Lira.....Advertising Director
John Hernandez.....Reporter
Cat Brown.....Reporter

Email:

Editorial: jenniferc@MinerSunBasin.com
Advertising & Questions: michaelc@MinerSunBasin.com

CopperArea.com

Find us at [Facebook.com/PinalNugget](https://www.facebook.com/PinalNugget)
Follow us on twitter.com/CopperAreaCom

Published the fourth week of each month. Business office is located at 139 8th Ave, P.O. Box 60, San Manuel, AZ 85631. Subscription rates paid in advance: \$9.00 per year or \$5.00 for 6 months U.S. Change of address should be sent to the publishers at P.O. Box 60, San Manuel, AZ 85631.

Member: Arizona Newspaper Association.

Telephone

San Manuel Office: (520) 385-2266
San Manuel Office Fax (520) 385-4666
Kearny Office: (520) 363-5554
Kearny Office Fax (520) 363-9663

"We sure could use a little good news today."

— Anne Murray

Advertising Information

For a free media kit, call Mila at (520) 827-0676 or go online to: CopperArea.com and click on "Advertise With Us."

Call for a reservation to join a Beginner Digital Astrophotography Workshop from 2-4 p.m., with volunteer Mike Weasner, for an introduction to taking nighttime astro-photos using any camera alone, or in combination with a tripod or telescope. There will be DOOR PRIZES given out to some lucky workshop participants!

Stick around for Live Music and get some astrophotography playtime during the evening Star Party! No reservation needed to bring your own

picnic and enjoy Live Music from 4:30-6:30 p.m., by local favorites, the Oracle Ridge Band. The band will play a dancy 'Americana' mix of country rock and blues favorites, featuring mandolin, steel guitar, bass and drums.

Then from 7-9 p.m., Tucson Amateur Astronomy Association will host a Star Party with telescopes and interpretation of night-sky objects. More event details to be announced.

Thanks to Friends of Oracle State Park for music

Continued on page 3



STAR PARTY

Enjoy live music on the Kannally House Patio while viewing the stars through telescopes provided by the Tucson Amateur Astronomy Association.

Park

Continued from page 2

sponsorship. No reservation needed, except for the workshop. Free with park admission.

Oracle State Park is a 4,000-acre wildlife refuge with over 15 miles of trails. Oracle State Park is an International Dark Sky Park, designated in 2014 by the International Dark Sky Association.

The park is open 8 a.m. to 5 p.m. seven days a week, beginning March 1. Except as noted, programs are free with park admission of \$7 per vehicle at the main gate on Mt. Lemmon Rd. in Oracle. Call the park office at (520) 896-2425 to make reservations, if needed. check online at azstateparts.com/oracle/events for up to the day scheduling.

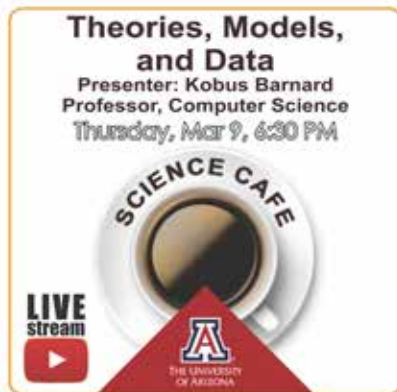
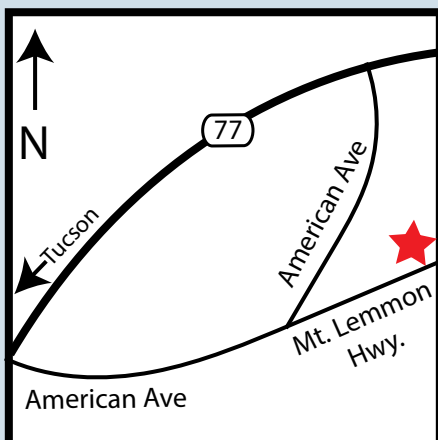
Oracle State Park is located in the northern Catalina highlands, a mere 45-minute drive north of Tucson, along designated scenic corridor route 77, or 2 hours from Phoenix, via peaceful route 79.

Ongoing Weekends: Tours of the Historic Kannally Ranch House

Visit the park office/gift-shop and take a self-guided tour through the multi-level Kannally family home. The Mediterranean-Revival Style ranch house built 1929-1933, is listed on the National Register of Historic Places.

Guided Tour of the historic Kannally Ranch House begins at 11 a.m. every Saturday and Sunday, for the drop-in public. 45-minute duration. Alternate times may be added by reservation.

Continued on page 13



DESERTVIEW CENTER
PERFORMING ARTS
For tickets and additional information
call: (520) 825-2818 or
visit: www.dvpac.net

Watch and
Subscribe



Like and
Follow us



Like us on Facebook
[Facebook.com/PinalNugget](https://www.facebook.com/PinalNugget)



Saturday Mar. 18, 3 p.m.
**Music to Celebrate
 St. Patrick with
 Bryn Hamilton Irish Quartet**
Oracle Center for the Arts



Sunday, Apr. 2, 3 p.m.
**Signature Series
 Dr. Stephen Cook, Piano**
 Artistic Director's Concert
Oracle Center for the Arts

Sunday, May 7
**Community Concert
 Mexican Fiesta Featuring
 Mariachi Genaro Moreno**
Details Coming Later



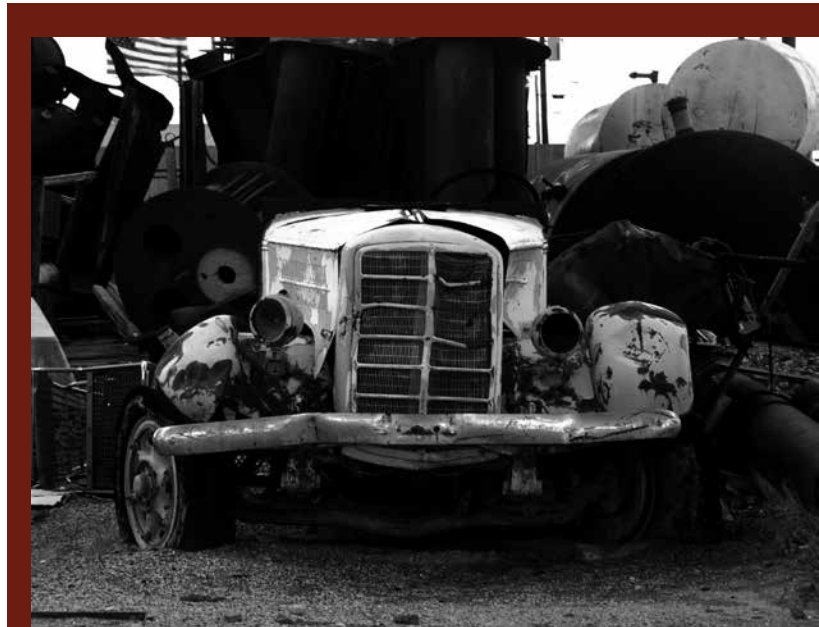
Sunday, May 21, 3 p.m.
**Voices in the Oaks Chorale
 Classic Broadway**
Ticket Cost: \$12
Oracle Center for the Arts



Oracle Center for the Arts

700 E. Kingston St., Oracle, AZ 85623
623-295-9677 • OraclePianoSociety.org

*Tickets available online or at the door.
 Signature Series Ticket Prices: \$30 advance/\$35 door
 Limited free student tickets available with ID.*



IN BLACK AND WHITE
 Untitled photo by Scott LeGear
 on display at Subset Studio

Oracle Artists Studio Tour set for April 8 & 9

Seeing art where it is made and talking with the artists is an event any time, but it's a really memorable experience among the oaks and granite boulders in the Arizona high desert on the north slope of the Catalina Mountains.

This year the opportunity comes on April 8 and 9, when Oracle's art community will welcome visitors to the town's 25th annual Artist Studio Tour. Go to www.oraclestudiotour.com.

The work, all original and hand-made and offered directly by the artists, is wide-ranging and eclectic. It includes paintings in oil, watercolor and encaustic, drawings in pastel and ink, decorative and

functional pottery, fine-art photography, clay, steel and iron sculpture, glasswork, jewelry, ceramic wall hangings, fiber art, found-object sculptures, collage, woodwork, decorative gourds and even handmade bee-houses.

Finding the studios is easy. Pick up a self-guiding map at the Welcome/Visitor Center at 1470 W. American Ave. in Oracle, where you also will see a sample of each artist's work.

This year more than 40 artists are showing. Using the map, just follow the purple roadside signs. Here's what you will see:

At the **Wilson Barn**, watercolors by Jill Caid, Nyla Butler, Margie Buchanan and Vonnie West, and photography by Jim Caid. At **Rancho Linda Vista**, Oracle's historic artists' colony, Margo Burwell screen prints and jewelry, Joy Fox (McGrew) clay sculptures, Allegra Howell woodwork, Martin Levowitz paintings, photography and sculptures, Andrew Rush print-making and

watercolor. At the **Oracle Art Station**, Jenny Kilb acrylic and digital paintings, Jenine Mayer figurative drawing, painting and collage, Laurel Roth jewelry, Carolann Small fiber art, Margy Smith paintings and multi-media, and Marguerite Wainio fused-glass and beaded jewelry.

At **Acadia Ranch Museum**, Glenda Neff hand-built stoneware, Theresa Poalucci acrylic painting, Laura Stiltner ceramic wall hangings and jewelry, Rich Vokoun artwork from gourds

and Risa Waldt painting and drawing. **Creighton Studio and Screen Porch**: Diana Creighton oils and clay sculpture, Judy Walsh encaustic painting and jewelry, Joel Nilsson handmade pottery for everyday use and Ned Creighton steel whimsey. **Mud Pie Studio**: Sue Armbrust handmade pottery, Alicia Bristow jewelry.

Triangle L Ranch: Sharon Holnbeck iron sculpture and glasswork, Susan Daigneault bee-houses and bird-feeders and Karen Medley clay sculpture and pottery plus a sculpture path and an adobe barn exhibition. **Art Under The Oaks**: Carolyn Blair acrylic painting. **Budd Studio**: Colin Budd porcelain stoneware and Neilma Budd mixed media paintings.

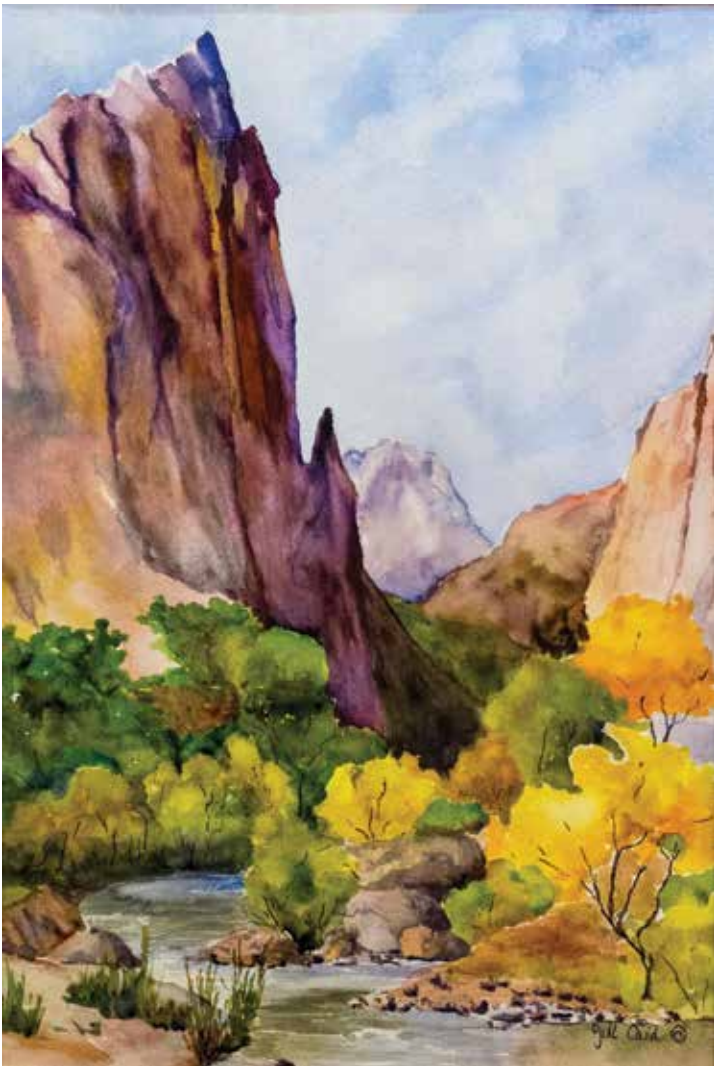
Cowlin Studio: Barbara Cowlin acrylic water reflections

and James Cowlin fine-art photography.

Subset Studio: Scott LeGear photography. **Tenary Studio**: Jan Tenery pastel miniatures.

Hair Country: MaryHelen Vasquez watercolor and oils.

Branch/Szekely. Quentin Branch and Julie Szekely rammed earth construction.



↑ ZION IN AUTUMN

Watercolor by Jill Caid on display at the Wilson Barn.



↑ SHINY AGAVE

Multi-media piece by Margy Smith on display at the Oracle Art Station.

Oracle Artists Studio Tour • 40 artists • 15 sites

april 8 + 9
10 til 5

oraclestudiotour.com

25th annual

come see samples of the artists' work
at our **welcome center**
then pick up our map and explore

OLH ORACLE LAND & HOMES

www.olhoracle.com



32823 S Redington Rd., SM MLS#: 21623009
Beautiful 12.63 acre parcel along the San Pedro River. Huge mesquite trees, artesian well, large pond, horse facilities, chicken pens on flat usable land, 4 bedrooms or 3 bedrooms plus a den. Floor plan is open with large bedrooms. New paint in the downstairs area of the home. New A/C and heat pump July 2016. Newer refrigerator, new stove and dishwasher. Solidly built 11 inch walls. Dual pane windows, metal roof, wood siding. Property borders a conservation easement. New well pump. \$235,000

605 N John Adams St., Oracle MLS#: 21620089
Hard to find 4 Bedroom home on a large lot (.62 Ac) with plenty of oak trees. Paved driveway with a covered two car carport and lots of space for RV and other toys. Backyard has a swimming pool with a covered patio making a great entertainment area. Master bedroom opens up to a small patio area. Cozy family room with a wood burning fireplace. Ceramic tile and ceiling fans in most rooms and granite counter tops. \$149,000

1812 W. American Ave., Oracle, AZ
(520) 896-9099 • (520) 400-0242 (Cell)

Stop by our office for a complete listing of available homes, manufactured homes and land for sale in Oracle and the surrounding area.

What do you need to ship?

MAIL WELL SHIPPING

15270 N Oracle Rd, Ste. 124
in Catalina
(NE corner of Bashas' at Golder Ranch Rd)

520.818.0660

Authorized shipping center for:



DOMESTIC • INTERNATIONAL • GROUND • AIR

- Mail Box Rentals • Packing • Picture Framing
- Knife Sharpening • Document Shredding
- Document Faxing • Document Scanning
- Document Next Day Shipping • Document Copies
- Document Printing

A TO Z PLUMBING LLC

RESIDENTIAL • COMMERCIAL • INDUSTRIAL

LICENSED • BONDED • INSURED



- Domestic Well Repair
- Sewer Pipe Camera, Inspection & Location Service
- Septic Tank and Leaching Field Repair/Replacement
- Septic Engineering and Inspection

TIM RAGELS
OWNER/REGISTERED
CONTRACTOR



520-603-6607

FOR ESTIMATES/APPTS

ATOZPLUMBINGAZ.COM

TIM.AZPS@YAHOO.COM

SERVING THE TRI-COMMUNITY, CATALINA, ORO VALLEY, TUCSON, DUDLEYVILLE, WINKELMAN, KEARNY

Saving enough for retirement?



Investing in an IRA can make a big difference!

Add to your retirement piggyback with an IRA contribution today. The earlier you begin contributing, the more you can benefit from tax-deferred growth. Call me and I'll show you how a Traditional or Roth IRA can help you save for the future.



520-385-4725

WARREN J. MYERS

www.warrenjmyers.com

Arizona Financial Services

603 W. 6th Ave., San Manuel, AZ 85631



Registered Representative

Securities offered through Questar Capital Corporation (QCC), Member FINRA/SIPC. Advisory Services offered through Questar Asset Management (QAM) a Registered Investment Advisor. Arizona Financial Services is independent of QCC and QAM.

Besh Ba Gowah: Experience the Ancient History of Arizona

If you are a fan of Archaeology, a must see is the Besh Ba Gowah Archaeological Park and Museum in Globe.

This multistoried, 200-room Pueblo Salado ruins is located only a mile from the city of Globe. Visitors can take a self-guided tour, walking around the rooms and even climb ladders to check out the second story of this 800-year dwelling that overlooks the Pinal County Creek.

Besh-Ba-Gowah is an Apache word meaning “Place of Metals.” A reference to the mining activity in the area. The site was originally occupied by the Salada people between 1225 to 1400 AD. The ruins were first investigated by Adolf F. Bandelier in 1883 and in 1935 true excavation of the site began. The site is thought to originally house 400 rooms.

The adjacent museum houses one of the largest collections of Salada artifacts, giving you a peek into the everyday lives of the people who once lived there. See prehistoric pottery, stone tools, jewelry and woven artifacts. There are also botanic gardens to explore where you can learn more about the plants that were used by the people who lived there. The adjacent Museum includes a theater which plays videos packed full of information about the ancient culture and the ruins. There is also a bookstore where scientific journals can be accessed by visitors, as well as a gift shop.

During the month of December, the Annual Festival of Lights is held at the site. The ruin walls are lined with 2200 glowing luminaries that set the dwelling aglow with soft light. The festival offers some entertainment as well as a variety of food vendors.

Besh Ba Gowah is open daily from 9 a.m. to 4:30 p.m. The site is pet friendly. Admission is Adults \$5 / Seniors (65+) \$4 / Children (under 12) FREE. During Summer between July 1 through September 30 the museum is closed Mondays and Tuesday. It’s also closed on the following holidays: Thanksgiving, Christmas and New Year’s Day. It is located at 1324 S. Jesse Hayes Rd. Globe, AZ 85501. Telephone: (928) 425-0320. Email: beshbagowah@globeaz.gov Website: bit.ly/beshbagowah



⤴ A PIECE OF AZ HISTORY

Besh Ba Gowah is located in Globe and offers visitors a taste of ancient history. Photo courtesy Besh Ba Gowah.

A VIEW OF THE RUINS ⤵

The grounds of Besh Ba Gowah show the foundation of the ruins and how the Salada People might have lived.



Kearny artist finds beauty in the small details

Angelina Bauer
Pinal Nugget

Jennifer Cude is a local artist living in Kearny, AZ. But “artist” is only a fraction of the titles she’s earned. In addition to being an artist, Jennifer is a wife, mother, grandmother, teacher, and animal rescuer. It almost seems that there is nothing she has not done.

Born and raised in Kearny, Jennifer got into art at an early age. Growing up, she admired the art of her two grandfathers and then learned she

was a bit of an artist herself. “I can remember as a young child, I painted something. And it was really good. I surprised myself by that. So I decided



SUNFLOWER

This piece by Jennifer Cude is done in Prismacolor colored pencil.



I love the intricacies of drawing something really small and close.



to start taking art classes in high school and was pretty good at drawing,” Jennifer says. She also cites Claude Monet as an early inspiration. She says she was “always fascinated that he could make an image with just spots of color that didn’t make any sense when you were up close. He’s always been my favorite artist when I kid, and I even wrote several reports on him.”

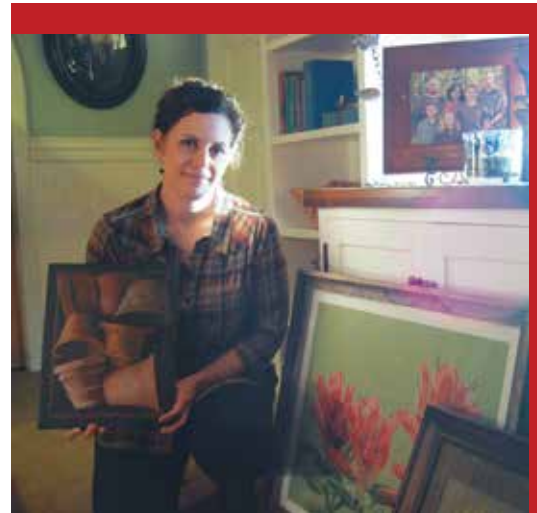
As time went on, Jennifer refined her craft and came into her own. When it came time for college, she moved away from Kearny and spent some time in Los Angeles and the Valley. Jennifer began working towards an art degree, but found it really was not for her. “I didn’t really feel like I fit in. I’m not a conventional artist in that sense, I didn’t want to go beyond drawing,” Jennifer tells the *Pinal Nugget*. So instead of continuing with an art degree, she majored in education

at NAU where she gained a love of teaching history.

Jennifer then returned to her roots and decided she wanted to stay in Kearny after meeting and dating her then-boyfriend, now-husband, Jeff. Once back in Kearny, she put her education degree to good use and started working at Ray High School, the same high school she graduated from and all four of her kids have attended or currently attend. Jennifer teaches Social Studies, Drama, and helps out with the Junior High School Student Council. “With teaching these days, you’re really expected to do a lot of other things to help out at school ... I love it, it’s so much fun, but it’s so time consuming.” Her two kids currently attending Ray are involved in sports, and in small town like Kearny, sports means away games with long travel times, and Jennifer wouldn’t miss a game for the world.

To add on to the madness, Jennifer has three dogs and a mini-farm in her backyard with a couple of rabbits, chickens, donkeys, and a turkey.

Even with life getting in the way, Jennifer still finds time and inspiration



↑ HOME GALLERY

Artist Jennifer Cude with some of her completed pieces.

← TALL POPPY

This piece, Poppy, shows Jennifer Cude’s attention to the smallest detail.

to paint. She uses Prismacolor colored pencils and some water colors on art paper. She then digitizes her images and sells them online. However, her art is not just relegated to online; she was

Continued on page 10



↑ PERSPECTIVE

Larger subjects also receive Jennifer Cude’s attention to detail like in this piece entitled, Stanfield Texaco Station.

↓ EAGER

Artist Jennifer Cude even gets inspiration from the inhabitants of her mini-farm.



Kearny Artist

Continued from page 9

also a part of an exhibit at Tohono Chul in Tucson, AZ and has art on display in several places in Arizona.

In an increasingly industrialized world, Jennifer prefers “authentic, organic things” and calls her style “back to nature” which comes out in her paintings and even in her home. Flowers, wood grain, and earthy tones make up the images that she creates. And just like Monet, it’s the small details that inspire her.

“I love the intricacies of drawing something really small and close.”

Jennifer has plans to continue her artistry and branch out into different mediums in the future. Pottery, woodworking, jewelry, and soap making are just a few of the areas she’d like to explore.

No matter what Jennifer plans to undertake, her signature style and talent will surely shine through, making each piece as unique as the last.



ARTIST AT WORK

Kearny artist Jennifer Cude carefully works to add detail to her latest piece.



NO CITY SALES TAX!

**Best Prices on
New & Used!**



Our Body Shop and Service Department Do Excellent Work

Call 520-818-FORD (3673)

3950 W. HWY 77 • ORACLE, AZ (Just 2.7 miles north of the Biosphere)

Old Time Pizza

Kearny, AZ

(520) 363-5523

Thanks for Making Us #1



Find the Random in You!

Visit us in Superior on the **Second Friday of the Month!**



151 Main St., Superior
520.689.0166

Winter Hours: Tues-Sun 11:30 a.m. to 5 p.m.
Summer Hours: Wed-Sun 11:30 a.m. to 5 p.m.

 Follow us on Instagram

 facebook

www.facebook.com/randomboutiqueaz

Random Boutique



Tri-Com Real Estate

Member Tucson Multiple Listing Service

22 McNab Parkway
San Manuel
385-4627

Please consider us if you're thinking of selling your home. Your hometown real estate company is here to help. If you're planning to purchase a home, we'll be happy to assist you in finding the right home with the right financing for your needs.

HOMES FOR SALE

SAN MANUEL:
THREE BEDROOM, 1 BATH
117 W 6th Ave. Kitchen upgraded w/wood cabinets and island. Dual pane windows. Block storage shed. \$39,900
102 W San Pedro New paint & tile. Corner lot with wood privacy fence. 2 car driveway. Home has 2 storage units. \$68,500

TWO BEDROOM, 1 BATH
309 McNab Carport with **SALE PENDING** ove, frig & washer. \$30,000
126 Webb Upgrades galore: dual pane windows, A/C and evaporative cooling, block garage, 2 car carport, full covered patio with concrete walks, ceramic floors, handicap accessible bathroom, remodeled kitchen with abundance of cabinets & all appliances. \$68,500

MAMMOTH:
86265 Barrows Beautiful views from this home on 3.54 acres with private well, front & back covered patios, AZ room and A/C. Metal roof is 1 year old. Workshop, paved driveway & all appliances stay. \$135,000
201 River Dr. Beautiful views, .69 acre corner lot, totally chain link fenced, 3 bed, 1 3/4 bath mobile home with large front covered patio, 2 car garage and workshop. \$39,900

COMMERCIAL LAND:
• .99 acre commercial lot with CB-2 zoning in San Manuel. \$12,500. Owner financing available with 15% down, 8% interest for maximum of 10 years.

After hours or evenings call:
PAULA MERTEN-BROKER.....520-471-3085
BILL KELLAM.....520-603-3944
MIKE GROVER.....520-471-0171
JENNIFER COX.....520-730-4515

 Open Monday-Friday 9 a.m. to 5 p.m. and Saturday 10 a.m. to 2 p.m. Available by appt. anytime.



SUN LIFE FAMILY HEALTH CENTER

Family Care by Your Medical Team at
Sun Life Family Practice in Oracle
Ted Crawford, DO & Ruth Seppala, FNP
Welcoming Patients of All Ages

 Now Offering Integrated Behavioral Health



520-896-2092 Monday-Friday 8 a.m. - 5 p.m.
1870 W. American Way, Oracle • www.sunlifefamilyhealth.org
Accepting Most Major Insurance – AHCCCS – Medicare
No Health Insurance? We Can Help!
Application assistance with Medicare, AHCCCS, Healthcare.gov and Sun Life's discount programs.



18 N. Magma Ave., Superior

Superior Elite Team



Pamela Peck
Associate Broker/
Branch Manager


602.908.4377 cell
520.689.0149 fax
pamela@myhomegroup.com




THINK GREEN



Homes for *your* lifestyle,
designed to stay warm in the winter
and cool in the summer.



RAMMED EARTH Solar Homes Inc.

Quentin Branch 520.896.3393
www.RammedEarthHomes.com
AZ Lic. #064669

New Year – New Ride – New Adventure!

Finance or Refinance Your Vehicle
Loan with PCFCU!

New Auto Loan?
Receive a Vacation
Voucher \$500*
up to

- Get pre-approved for better bargaining power
- Refinance your vehicle loan to save even more

It's Easy to Apply...
CLICK: PinalCountyFCU.com
CALL: 520-381-3100
VISIT: Any PCFCU branch




Like Us on Facebook



NCUA Pinal County Federal Credit Union®

Special offer valid through 03/31/2017. Subject to membership eligibility, loan is subject to credit approval, not all will qualify. Offer valid for direct lending only, offer not valid through Indirect Lending. Refinancing of vehicle loans currently held at PCFCU & Commercial vehicle loans are excluded. *Minimum loan amount for voucher: \$10,000, Tax reporting of value of vacation voucher is member's responsibility. Other restrictions of value apply. Subject to change without notice. See credit union for details.



ORACLE INN STEAKHOUSE

New Hours: Closed Monday.
Open T-Th 4-9 p.m.; Fri-Sun 11 a.m. to 9 p.m.
Check Website for Lounge Hours

Celebrate St. Patrick's Day

Friday, March 17

*Specials All Day
Green Beer*

Our FAMOUS Corned Beef & Cabbage!

Live Music Every Friday & Saturday 7-11 p.m.

German Weekend at Oracle Inn
March 10th, 11th & 12th and April 14th, 15th & 16th

Now Hiring
Experienced Line Cooks
CALL 520-896-3333

520-896-3333 • www.oracleinn.com
305 E. American Ave., Oracle, AZ
2 miles off Hwy 77 in Oracle, AZ (Just east of the Biosphere 2)

Park

Continued from page 3

Sunday, March 12: Craig's Big Year, Survey of 25 Arizona Important Bird Areas (IBAS)

Learn about these unique and beautiful habitats and the birds that inhabit them. Join Presenter, Craig Anderson, in the living room of the Kannally Ranch House for a program beginning at 1 p.m. for one hour. Craig is an Audubon Arizona IBA Volunteer. He has birded Arizona for 46 years, participated in numerous Christmas Bird Counts and is recognized as a skilled and knowledgeable Field Trip Leader. Please call for a reservation; free with park admission.

Sunday, March 19: Bighorn Basics, 1 p.m.

Join Arizona State Parks volunteer, Richard Boyer, at the Kannally Ranch House for a 35-minute talk to learn more about bighorn sheep. What are they? Where have they been? Where are they now? Many of the tools we use can be compared to the tools the Bighorn Sheep use to survive in

mountainous areas of Arizona. For several years, Richard presented this Bighorn Basics program at Rocky Mountain National Park in Colorado where he retired as a seasonal National Park Service Ranger. Free with park admission. Reservation preferred.

Saturday, March 25: Bugs of America, noon to 4 p.m.

Learn more about the world of bugs with Shane Burchfield out of Portal, AZ. He'll start with a formal talk, and stick around for an interactive opportunity with visitors. This Entomology Education Program can answer all your questions about Arizona's wildlife and in particular, its native invertebrates. Get close to his collection of live centipedes, scorpions, tarantulas and more. Thanks to Friends of Oracle State Park for sponsoring this program. No reservation needed; free with park admission.

Saturday, April 1: Birding Program with Kathe Anderson

Event begins at 4 p.m. in the Kannally

Ranch House living room with a one hour presentation, "Temporary Custody of a Rainbow". Learn the backstory of ten colorful migrants, such as the yellow warbler, blue grosbeak, summer tanager, and others. The talk will be followed by a 90 minute bird walk outside, ending about 6:45 p.m. Bring a snack and wrap up about 7:15 p.m. with a bird list while watching the sunset from the patio. Free with park entrance fee; reservation suggested.

Sunday, April 2: Birding and Breakfast

Kathe Anderson returns to offer an early morning guided bird walk at the park, beginning at 7 a.m. Following the two hour walk, participants will be treated to a special breakfast offering on the patio of the Kannally Ranch House, courtesy of the Friends of Oracle State Park. The group will review the morning sightings while enjoying coffee, treats and great views. \$10 includes the park entrance fee. Reservation required, please call.

15970 N Oracle Rd
Tucson AZ, 85739

OPEN:
Tues-Fri 10AM to 2PM & Sat 9AM to 2PM
Donations Accepted: Mon-Sat 8AM to 3PM
520-825-9101







BRING IN THIS COUPON FOR
20% OFF
ANY ONE REGULAR PRICED ITEM
*EXCLUDING JEWELRY AND VINTAGE ANTIQUES AND COLLECTIBLES.
One Coupon per customer per day.
Facsimiles not accepted. COUPON EXPIRES 3/31/17

THE GOLDEN GOOSE THRIFT SHOP IS A 501(C)3 NON-PROFIT CHARITABLE ORGANIZATION.

calendar of events

Spring 2017

We wanted to share a few of the local events with our Pinal Nugget readers.

COPPER DUST STAMPEDE

10

Friday, March 10, through Sunday, March 12, beginning at 9 a.m. Copper Dust Stampede Rodeo at the Gila County Fairgrounds, Hwy. 60 towards Show Low, 10 minutes from Globe. Enjoy professional rodeo action with bucking bulls, saddle bronc riding, barrel racing and more. The weekend action starts Friday night at the Gila County fairgrounds...and don't forget the rodeo dance Saturday night. globemiamichamber.org



PIONEER DAYS

16

March 16-19, annual Pioneer Days in Kearny. This year's theme is Heroes and Villains. Parade on Saturday at 10 a.m. Carnival. Fantastic food. Entertainment throughout the weekend. There will be the usual merchandise vendors with handbags, t-shirts and toys the children love and on Saturday there will be information booths lined up along the Little League area of Pioneer Park. facebook.com/copperbasin.chamber



APACHE LEAP MINING FEST

17

March 17-19, Main St., Superior, Annual Apache Leap Mining Festival. Entertainment throughout the event, Chihuahua races, roping competition, food and retail vendors, crafts market, art walk, beer garden, Saturday night street dance and concert, speakers, lots of "hands on" things to do for all ages. Mining competition with a \$2,000 purse! Family oriented and ALL FREE except carnival and vendors. superiorarizonachamber.org



ATV JAMBOREE

23

Thursday, March 23, through Sunday, March 26. ATV Monster Jamboree. Hit the road on your ATV and side by side, with special trail rides planned in the beautiful Tonto National Forest surrounding Globe. globemiamichamber.org



GLOBE MIAMI HOME TOUR

8

April 8-9, 9 a.m. to 3 p.m., 33rd Annual Historic Home and Building Tour, E. Sycamore St. & S. Broad St., Globe, AZ 85501. Enjoy the territorial architecture of Globe as you are driven in style to each stop where a host will regale you with stories of the early days, point out architectural details and give a history of the building owners. Tours leave from the train depot in downtown Globe. globemiamichamber.org



ORACLE ARTIST STUDIO TOUR

8

April 8-9, 10 a.m. to 5 p.m.; More than 40 artists and artisans, working in nearly every medium, are showing and selling their original art in working studios, eclectic galleries and shared venues. The Visitors Center at 1470 W. American Ave., Oracle, provides a convenient first stop for visitors, with displays of works by participating artists, a full self-guiding tour map, and refreshments. oraclestudiotour.com



ORACLE OAKS FEST

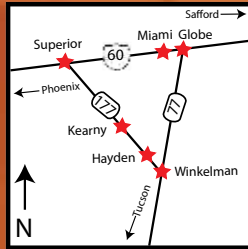
22

On Saturday, April 22, Oracle Oaks Festival and Oracle Spring Run Car Show. The Oracle Community Center, once again, hosts the Oaks Festival. Start the day with breakfast at the Oracle Community Center, then cheer along at the festival parade and Oracle Spring Run Car Show (sponsored by the Oracle Historical Society). oraclecommunitycenter.org or oraclehistoricalsociety.org



VISITING THE COPPER TRIANGLE

An easy day trip from Phoenix or Tucson!



Palo Verde RV Park

Winkelman, AZ

520-356-7930 • Hwy 77 – Mile Marker 133

superior
SKINCARE
208.946.3000
facials. waxing. dermaplaning. peels. makeup.

Sun Flower Market
Coffee • Pastries • Deli • Gifts
Monday-Saturday 9am to 4pm
149 W. Main St., Superior
480.216.5092

BULLION PLAZA
CULTURAL CENTER & MUSEUM

Bullion Plaza Cultural Center & Museum
150 N. Plaza Circle, Miami, AZ
(928) 473-3700
Open Th-Sat 11-3, Sun 12-3
www.bullionplazamuseum.org

SAVE MONEY MARKET

A Resupply Stop on the Arizona Trail

Home of the Fresh Roasted Hatch Green Chilis
August to Mid October

GREAT STEAK FREEZER MEAT BOX SPECIALS
420 W. Main St., Superior, AZ • 520-689-2265
SaveMoneyMeats.com

Sole to Soul Awakening

Health & Wellness Center

Massage Therapy • Reflexology • Reiki • Foot Detox • Other Healing Modalities
Himalayan Salt Lamps • Healing Crystals • Jewelry

REFRESH • RENEW • REJUVENATE

16 Magma Ave., Superior • 520-827-0253

Visit our Facebook page for upcoming classes & events

Casa DENOGEAN

Daily Specials

635 Hwy 60 • Superior • 520-689-2866

Rose's Roses Flowers AND **Gecko Collecto's**

520-689-2400
203 Main St., Superior
Fresh Flowers and Unique Gifts

Copper Hen Cafe & Bakery

Serving Breakfast, Lunch and Dinner

157 W. Cedar St., Globe • (928) 473-1207